



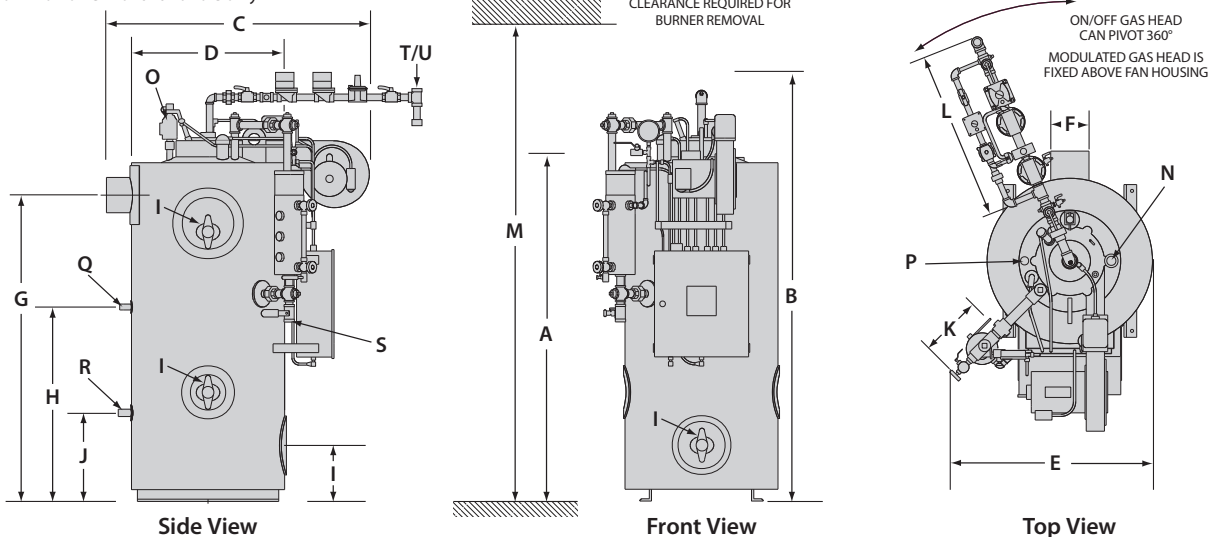
Product Data Submittal
 Fulton Model: ICS/FB-A and ICX/FB-F

**Fulton Classic and Edge
 Gas Fired Vertical Tubeless
 Steam Boilers**

Dimensions

Standard Models ICS/FB-A		4	6	9.5	10	15	20	25	30	50	60	
Models ICX/FB-F			6	9.5	10	15	20	25	30			
Unit Size	BHP	4	6	9.5	10	15	20	25	30	50	60	
Height												
(A)	Boiler Overall	IN	47.5	57.5	67.5	63.5	69	72.5	75	82.5	87	93.5
		MM	1207	1461	1715	1613	1753	1842	1905	2069	2210	2375
(B)	Boiler Height w/ Trim* & Fuel Train Assembly	IN	63.5	73.5	83	80	86	91.5	93.5	101	106.5	118.5
		MM	1613	1867	2108	2032	2184	2324	2375	2565	2705	3010
Width & Depth												
(C)	Overall Depth Stack to Burner Fan Housing	IN	44	44	44	45	47	59.5	60	66.5	77	77
		MM	1118	1118	1118	1143	1194	1511	1524	1689	1956	1956
(D)	Boiler Diameter	IN	26	26	26	28	30	39	39	46	55	55
		MM	660	660	660	710	760	990	990	1170	1400	1400
(E)	Overall Width with Water Column	IN	35.5	35.5	35.5	37	39	46.5	47	52.5	60	60
		MM	902	902	902	940	990	1181	1194	1333	1524	1524
(F)	Flue Outlet Diameter	IN	6	6	6	6	8	10	10	12	12	12
		MM	152	152	152	152	203	254	254	305	305	305
(G)	To Center of Flue Outlet	IN	42	52	62	58	63	65	66	73.5	79	85
		MM	1070	1320	1575	1473	1600	1651	1676	1867	2007	2159
(H)	Feedwater Inlet	IN	27	33	33.5	33	33.5	34.5	34.5	34.5	35.5	35.5
		MM	686	840	851	840	851	876	876	876	902	902
(I)	Handholes - 3" x 4" (Quantity)**	IN	19 (x3)	19 (x3)	19 (x3)	19 (x3)	19 (x3)	19.5 (x4)	19.5 (x4)	20 (x4)	20 (x4)	20.5 (x4)
		MM	483 (x3)	483 (x3)	483 (x3)	483 (x3)	483 (x3)	495 (x4)	495 (x4)	510 (x4)	510 (x4)	521 (x4)
(J)	Blowdown Outlet	IN	15	15	15.5	15.5	15.5	16.5	16.5	16.5	17.5	17.5
		MM	380	380	394	394	394	420	420	420	445	445
(K)	Water Column Extension	IN	14	14	14	14	14	14	14	14	14	14
		MM	355	355	355	355	355	355	355	355	355	355
(L)	Gas Train Extension (CSD-1)	IN	25	23	25	23.5	22.5	22.5	23	20	15.5	12.5
		MM	635	584	635	597	571	571	584	510	394	317
(M)	Clearance Required for Burner Removal*	IN	72	82	92	86	92	96	98	106	114	124
		MM	1828	2083	2337	2184	2337	2438	2490	2692	2896	3150
Weights												
Approx. Shipping Weight	LB	1400	1700	1900	2000	2280	3400	3500	4780	6526	7280	
	KG	635	773	862	910	1036	1545	1591	2173	2966	3302	
Approx. Operating Weight	LB	1516	1833	2200	2200	2605	4042	4184	6197	8569	9531	
	KG	688	831	998	998	1182	1833	1898	2811	3887	4323	

NOTE: Recommended minimum clearance is 24" to the side and back of unit; 36" in front. * This dimension is 6" less for oil fired units 4-50 HP and 12" less for oil fired units 60 HP.
 ** Height shown for lower front handhole only



Specifications

Models ICS/ICX/FB-A/FB-F		4	6	9.5	10	15	20	25	30	50	60	
Boiler Connections												
(N)	Steam Outlet 15 PSI	IN	1 NPT	1 NPT		1.5 NPT	2 NPT	3 NPT	3 NPT	3 NPT	4 NPT	4 NPT
		MM	25	25		38	51	76	76	76	101	101
(N)	Steam Outlet 150 PSI (9.5 HP 100 PSI)	IN	.75 NPT	.75 NPT	1 NPT	1 NPT	1.25 NPT	1.5 NPT	2 NPT	2 NPT	3 NPT	3 NPT
		MM	19	19	25	25	32	38	51	51	76	76
(O)	Safety Outlet 15 PSI	IN	.75	.75		.75	1	1.5	1.5	1.5	2	2
		MM	19	19		19	32	38	38	38	51	51
(O)	Safety Outlet 150 PSI (9.5 HP 100 PSI)	IN	1	1	1	1	1	1	1	1	1.25	1.25
		MM	25	25	25	25	25	25	25	25	32	32
(P)	Safety Valve Inlet 15 PSI +	IN	.75	.75		.75	1	1.25	1.25	1.25	1.5	2
		MM	19	19		19	25	32	32	32	38	21
(P)	Safety Valve Inlet 150 PSI + (9.5 HP 100 PSI)	IN	.75	.75	.75	.75	.75	.75	.75	.75	1	1
		MM	19	19	19	19	19	19	19	19	25	25
(Q)	Feedwater Inlet	IN	.75	.75	1	1	1	1	1	1	1	1
		MM	19	19	25	25	25	25	25	25	25	25
(R)	Blowdown Outlet	IN	1	1	1	1	1	1.25	1.25	1.25	1.5	1.5
		MM	25	25	25	25	25	32	32	32	38	38
(S)	Watercolumn Blowdown	IN	1	1	1	1	1	1	1	1	1	1
		MM	25	25	25	25	25	25	25	25	25	25
(T)	NG/LPG Connection Size (Std CSD-1)	IN	1	1	1	1	1	1.25	1.25	1.5	1.5	2
		MM	25	25	25	25	25	32	32	38	38	51
(U)	Oil Inlet Size	IN	.25	.25	.25	.25	.25	.25	.25	.25	.25	.25
		MM	6	6	6	6	6	6	6	6	6	6
Ratings* (Sea level to 3000 ft.)												
Output	1000 BTU/HR	134	201	318	335	503	670	838	1005	1674	2009	
	1000 KCAL/HR	33.8	50.7	80.1	84.4	127	169	211	253	422	506	
Steam Output	LB/HR	138	207	328	345	518	690	863	1035	1725	2070	
	KG/HR	63	94	149	157	235	313	392	470	785	942	
Approximate Fuel Consumption at Rated Capacity+++												
Light Oil	GPH		1.8	2.8	3.0	4.5	6.0		9.0	15.0	17.9	
	LPH		6.8	10.6	11.4	17	22.7		34.1	56.8	67.8	
Propane Gas (ICS) (14"WC Required)	FT ³ /HR	67.2	100	159	168	251	335	419	502	837	1004	
	M ³ /HR	1.9	2.8	4.5	4.8	7.1	9.5	11.9	14.2	23.7	28.4	
Propane Gas (ICX) (14"WC Required)	FT ³ /HR		97	153	161	242	323		484			
	M ³ /HR		2.7	4.3	4.6	6.9	9.1		13.7			
Natural Gas (ICS) (7-11"WC Required)	FT ³ /HR	168	257	398	419	628	837	1047	1256	2093	2511	
	M ³ /HR	4.8	7.1	11.3	11.9	17.8	23.7	29.7	35.4	59.3	71.1	
Natural Gas (ICX) (7-11"WC Required)	FT ³ /HR		242	384	403	606	807		1210			
	M ³ /HR		6.9	10.8	11.4	17.2	22.9		34.3			
Burner Motor HP	3450 RPM/60CY							1/3 Gas	1/3 Gas		1.5 Gas	1.5 Gas
	2850 RPM/50CY	1/3	1/3	1/3	1/3	1/3	3/4 Oil	3/4 Oil	3/4	2 Oil	2 Oil	
Electrical Power Requirements** (Burner Only)												
120V, 60 CY, 1 Phase	(Gas/Oil)	Amps	7.2	7.2	7.2	7.2	7.2	7.2/13.8	7.2/13.8	13.8	20/24	20/24
240V, 50/60 CY, 1 Phase	(Gas/Oil)	Amps	3.6	3.6	3.6	3.6	3.6	3.6/6.9	3.6/6.9	6.9	10/12	10/12
208V, 50/60 CY, 3 Phase	(Gas/Oil)	Amps	2.4	2.4	2.4	2.4	2.4	2.4/3.7	2.4/3.7	3.7	6.9/7.8	6.9/7.8
240 V, 50/60 CY, 3 Phase	(Gas/Oil)	Amps	2.2	2.2	2.2	2.2	2.2	2.2/3.2	2.2/3.2	3.2	6.0/6.8	6.0/6.8
480 V, 50/60 CY, 3 Phase	(Gas/Oil)	Amps	1.1	1.1	1.1	1.1	1.1	1.1/1.6	1.1/1.6	1.6	3.0/3.4	3.0/3.4
Water Content												
	US Gallons	14	16	16	24	39	77	82	170	245	270	
	Liters	53	61	61	91	148	292	310	644	927	1022	

Specifications and dimensions are approximate. Fulton reserves the right to change specifications and/or dimensions. + High pressure boilers purchased with low pressure openings may have larger than specified opening sizes, consult factory for correct opening sizes. ++ 50 and 60 HP have two safety valves on low pressure. +++ Consumption based on light oil 140,000 BTU/G; Natural Gas 1000 BTU/ft³; Propane 2500 BTU/ft³. * Steam output ratings at 212°F (100°C) feedwater temperature; 0 PSIG ** Power requirements shown are for standard unit packages and may vary slightly when additional control options are added.



The heat transfer innovators.

The Fulton Companies

972 Centerville Road, Pulaski, NY 13142
Call: (315) 298-5121 • Fax: (315) 298-6390

Classic/Edge_ffsstd_pds-2012-0907